

* **HOST A FARMERS' MARKET BRUNCH P. 52**

MIDWEST

September 2008

Home

70 **TWINCITIES** **BEST**

SHOPS
FURNITURE
BARGAINS AND
MUCH MORE

STAGERS' SECRETS
MAKE YOUR HOUSE LOOK GREAT
(EVEN IF IT'S NOT FOR SALE)
OUTDOOR FIREPLACES
TAKE THE CHILL OFF

September 2008/ \$4.50



0 86771 56371 5

A clean-lined classic

Parade HomeSM #112

3812 Chowen Ave. S.,
Minneapolis

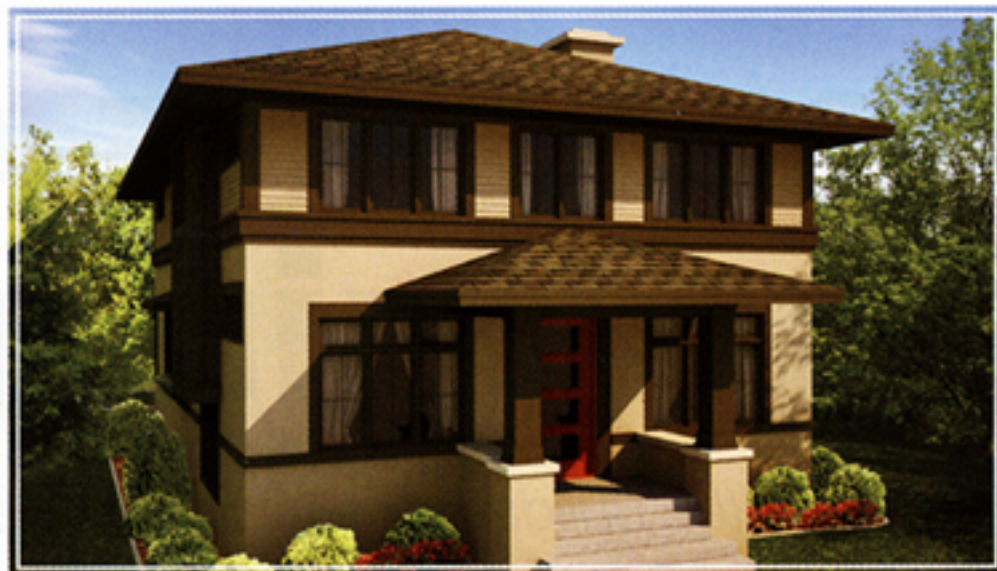
\$1,449,000

Bed and bath: 5 / 5
4,330 sq. ft. finished

.....
Elevation Homes
952-449-9448
elevationhomes.com

Design insight

Elevation Homes Project Director Nate Wissink says this home has a formal/informal quality carried consistently throughout every square foot of its living space. Intended for the City Lakes dweller who has an eye for design and appreciation for detail, it creates a classic, turn-of-the-century feel in materials and detailing, but includes hardware and a spacious open floor plan for today's lifestyles. "The idea is that the home has a clean-lined, classic look," Wissink says. "It's about fusing the old and the new. It takes classic forms and updates them for today's living."



Swank shelter

Highlights include luxurious, natural finishes throughout; an upstairs guest suite that "lives like a W Hotel;" a Fisher & Paykel appliance package; designer lighting and plumbing fixtures; flex space and a theater room on the lower level; as well as expansive windows, including a 16-foot wall of glass that opens from the family room to a private outdoor courtyard.

A place to call home

The kitchen island is a natural gathering place, and there's plenty of room here. The 9½-foot island features traditional mission-style cabinetry with a wenge-colored surround and bar top. Families will appreciate the home's setting in an established neighborhood blocks from Lake Calhoun.

elevation

A SIMPLE APPROACH TO CUSTOM HOMES

View portfolio and available properties at
www.elevationhomes.com.

tel 952 . 449 . 9448

Simplicity has found a new home.

Want to combine the best in city living with the best in custom homes? It's simple with Elevation Homes, a Division of Streeter & Associates. Specializing in the Minneapolis lakes area and surrounding long-established neighborhoods, we design and build timeless custom homes through a streamlined process that achieves extraordinary results — all within your timeframe and budget.

Don't miss our Fall 2008 Parade Home showcasing furniture by Room&Board. Handcrafted, American-made furniture and accessories designed to fit the way you live. Visit www.roomandboard.com or 7010 France Ave, Edina. Home tour: 3815 Chowen Ave S, Mpls.

Room&Board
HOME FURNISHINGS



Photo: Andrea Rugg MN LIC # 1380